



Friday, August 25th, 2017

Veteran Drummer & Artist—

Gilson Lavis' Portraits Debut At Salomon Arts Gallery September 15

“Louis Armstrong” by Gilson Lavis, circa 1960, ink on paper.



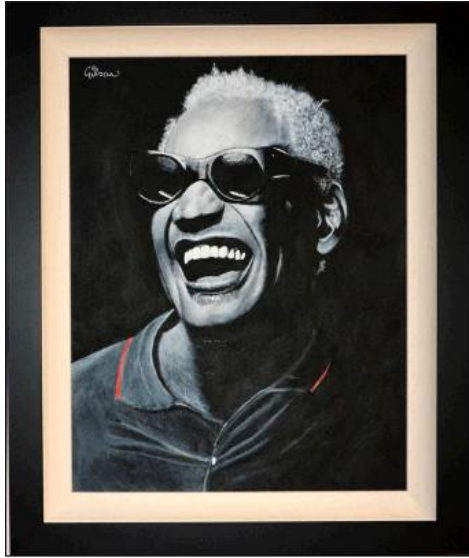
NEW YORK CITY — A unique exhibition of acrylic on canvas board paintings by veteran British rock drummer **Gilson Lavis** is making its US debut at Salomon Arts Gallery, 83 Leonard Street in Tribeca. **“Gilson Lavis: In Tune With The Portraits,”** will be on view September 15–October 5.

The mainly black and white music-themed portraits, along with some very personal sketches by Lavis, have become much sought after by tastemakers and those in the art and music circles in the UK. Best known as the versatile drummer with Jools Holland’s Rhythm & Blues Orchestra, Lavis is now shining the spotlight on his second career as an artist, after enjoying acclaim as one of the most sought-after drummers in the UK over the

last 40 years As many people know, Lavis was a founding member and original drummer in the group Squeeze, along with bandmate, pianist Jools Holland. Squeeze achieved huge success all though the 1980s and Gilson later went on to perform live or record with the likes of Bryan Ferry, Eric Clapton, Smokey Robinson, Cher, Paul McCartney, Barry White, BB King, Robert Plant, Amy Winehouse and so many others.

The collection of paintings and ink drawings by the veteran rock and R&B drummer includes his portraits of music legends and performers — much of his inspiration as an artist came out of his respect for the talented people he has admired, known and played with over the years. The list of paintings and sketches reads like a “Who’s Who” of popular music.

“Ray Charles” by Galvin Lavis, circa 1986, acrylic on canvas board.



Lavis said, “Most of my portraits feature artists and performers I have had the privilege of working with and that have been of inspiration to me. My art is a painted biography of my musical life, one I can never hope to finish, but what a joy it is to engage in.”

**For additional information, www.salomonarts.com or 212-966-1997.